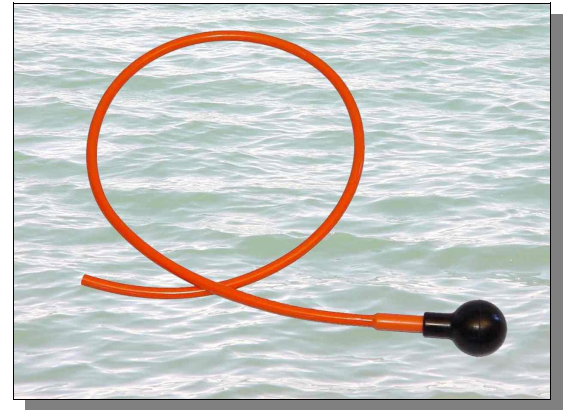


MODEL D/70

Spherical Transducers

- OMNI-DIRECTIONAL RESPONSE
- LOW NOISE PERFORMANCE
- ACOUSTIC REFERENCE STANDARD
- BROADBAND OPERATION
- AIR GUN & BOOMER MONITOR
- MARINE MAMMAL AUDIO SENSOR



With a combination of broadband frequency response, omni-directional beam pattern and high sensitivity the D/70 has become the most popular hydrophone in the Neptune range of "D" type spherical transducers.

The D/70 is a versatile transducer with a wide range of transmitting and receiving applications and is equally at home as a cost effective, general purpose hydrophone or as a precision, acoustic sensor in a scientific measurement system.

The all moulded construction and inherent strength of the PZT ceramic sphere achieves a robust, light weight, corrosion free design making it the ideal choice as a monitor hydrophone for air gun, boomer and other environments where high levels of shock are experienced.

Electrical connection to the transducer is by a low noise coaxial cable. The extruded polyurethane outer jacket of the cable enables the design engineer to build the transducer into customised equipment packages and readily obtain a waterproof seal by simple moulding techniques.

The D/70 is available with or without calibration. All calibrations are traceable to National Standards.

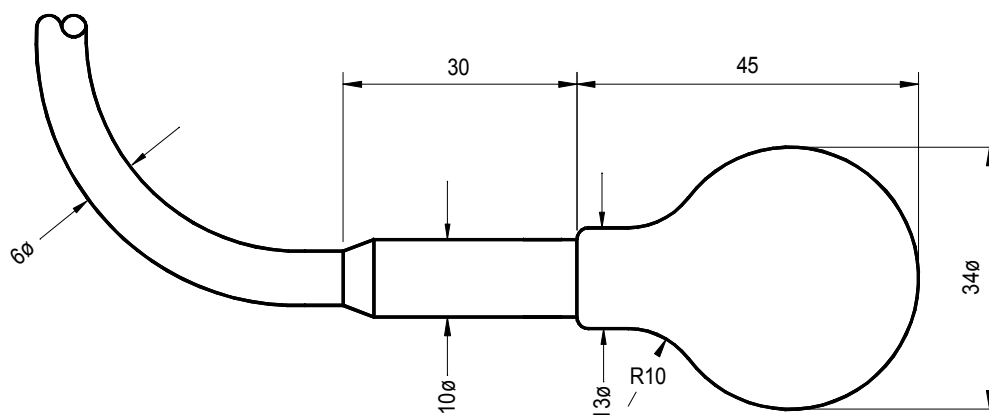
This product is stocked by our world-wide distributor

GSE Rentals Ltd, Aberdeen

Tel: +44 (0) 1224 771247

Fax: +44 (0) 1224 723116

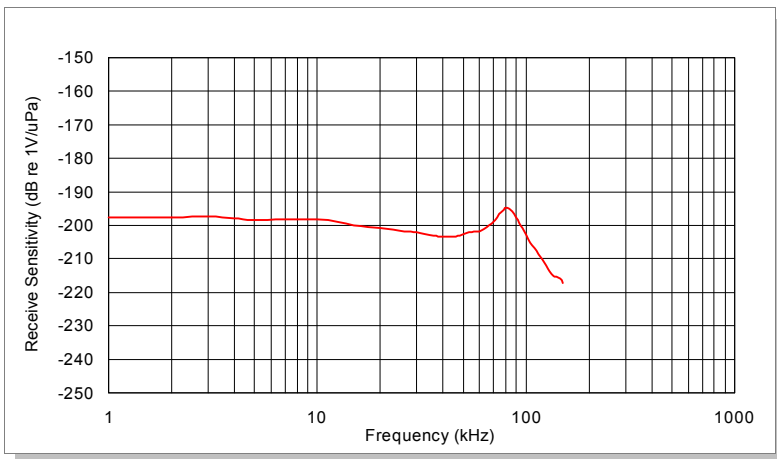
E Mail: info@gserentals.co.uk



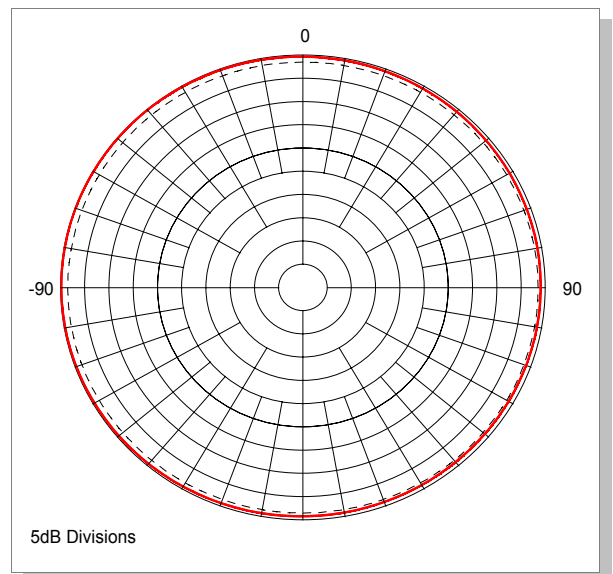
All dimensions in mm

Technical Specification	
Resonant Frequency	70 kHz (Nominal)
Beam Pattern	Omni ± 1 dB up to 100 kHz
Receive Sensitivity	See Graph
Transmit Sensitivity	See Graph
Capacitance at 1 kHz	8000 pF
Input Power	200 Watts around resonance
Operating Depth	1200 Metres
Operating Temperature	-5 to +40 °C
Storage Temperature	-40 to +80 °C
Cable Type	Polyurethane \varnothing 6mm Low Noise Coaxial
Cable Length	3 metres standard Additional lengths supplied to order
Ordering Information	
<i>D/70, cable length, calibration requirements</i>	

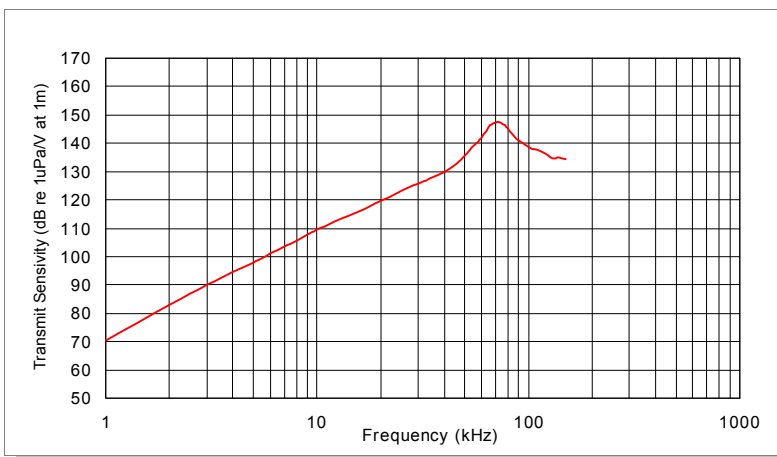
Receive Graph



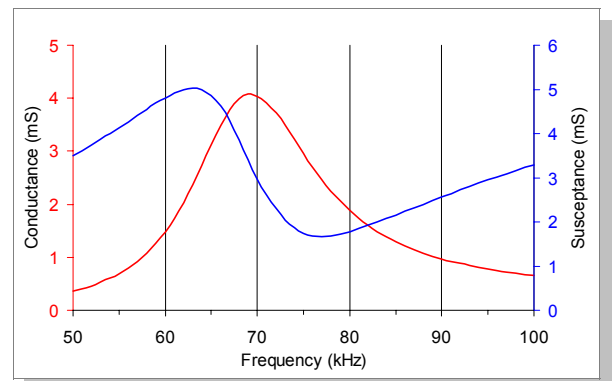
Beam Pattern



Transmit Graph



Admittance Plot



Data illustrated is taken from actual in-water measurements