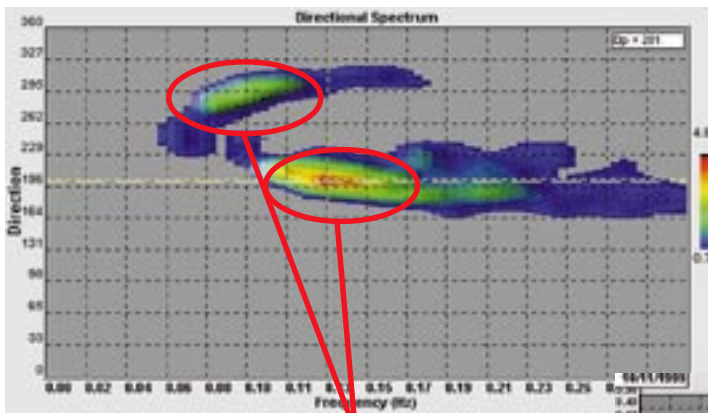


Better than a directional wave buoy, more powerful than a single instrument

Workhorse ADCP Multi-directional Wave Gauge

- Coastal Protection and Engineering
- Port Design and Operation
- Environmental Monitoring
- Shipping Safety



Produce impressive results. Multiple wave sources are clearly revealed with sharp definition in the frequency-direction spectrum.

An innovative and powerful capability for measuring waves and currents at once.

More than a wave gauge, ADCPs measure a complete frequency-direction wave spectrum and can operate in shallow and deep waters.

Better than a directional wave buoy, ADCPs distinguish waves from multiple directions and operate with less risk of loss or damage.

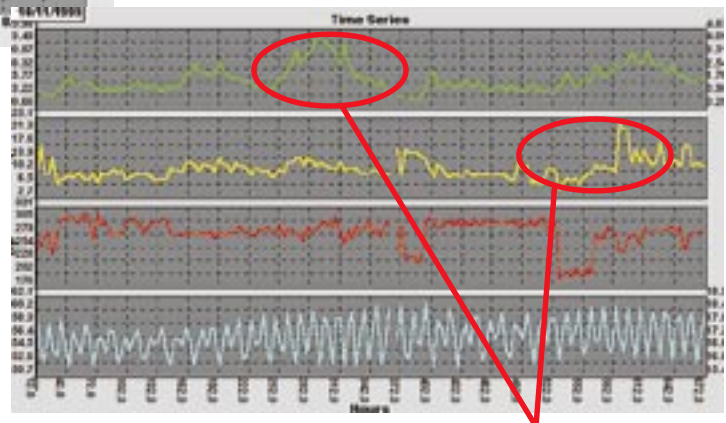
More powerful than a single instrument, the ADCP measures velocity profiles, water level and wave frequency-direction spectra at once.

Measure waves like never before. For more capability and better performance than the traditional choices for measuring waves...

...call RDI Instruments today.



*Performance and results
of an expensive wave array
without the cost and complexity!*



Rapid analysis and fast answers. See at a glance major wave events. Zoom on them immediately with interactive time series displays.



RD Instruments

www.rdinstruments.com

Tel: (858) 693-1178 sales@rdinstruments.com

Workhorse ADCP Multi-directional Wave Gauge

Waves Performance

See RDI Workhorse ADCP brochures for hardware specifications.

- Wave period: 1—30 seconds
- Sample rate = 2Hz
- Peak direction accuracy: $\pm 5^\circ$
- Peak frequency accuracy: $\pm 8\text{mHz}$
- Water depths to 80m

Installation

Battery power: for remote locations, 90 days or more depending on setup parameters.

Cable power/communications: provides unlimited duration.

Radio telemetry: for immediate wave information.

Benefits

- High definition of wave direction resolves waves arriving from several sources.

- Simple logistics of a single bottom-mounted deployment.
- Less risk of loss or damage.
- High quality surface measurements made from more secure seabed site.

Upgrades available

- Memory - 10-220Mb PCMCIA cards
 - External battery case
 - AC/DC Power converter, 48V DC output
- Consult with RD Instruments to upgrade your existing Workhorse system.

Software

Planning software: self-contained or real-time deployment set up with waves, current profiles or both.

Monitoring software: Data acquisition and processing.

Viewing software: zoom, animate, average. Export to bmp, png or text files.

Complete system

Available as a complete system including Workhorse ADCP with waves capability, or as an upgrade to ADCPs already in the field. Waves capability includes: Hardware, firmware, software modules and system documentation.

For More Information

Call, e-mail or visit our web page.
Internet: www.rdinstruments.com

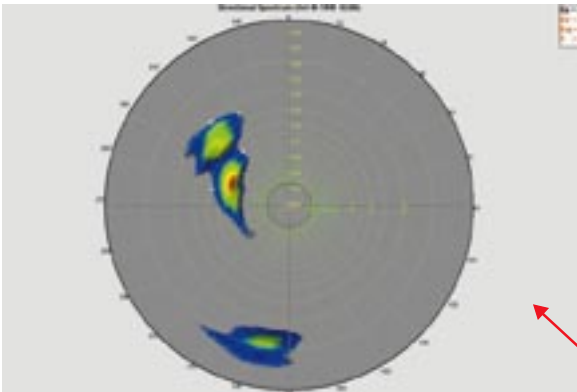
RD Instruments

9855 Businesspark Avenue
San Diego, CA 92131 USA

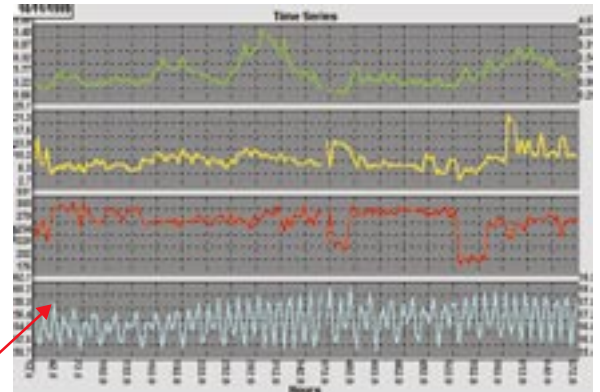
Tel: (858) 693-1178

Fax: (858) 695-1459

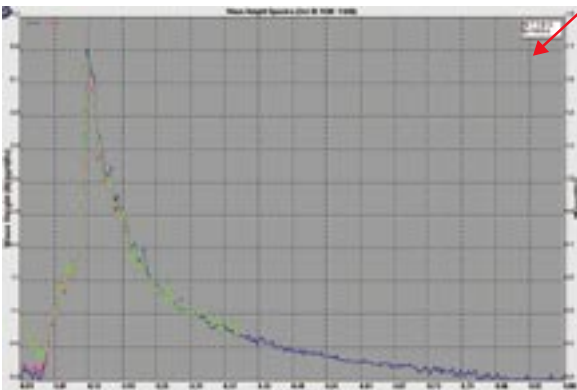
E-mail: sales@rdinstruments.com



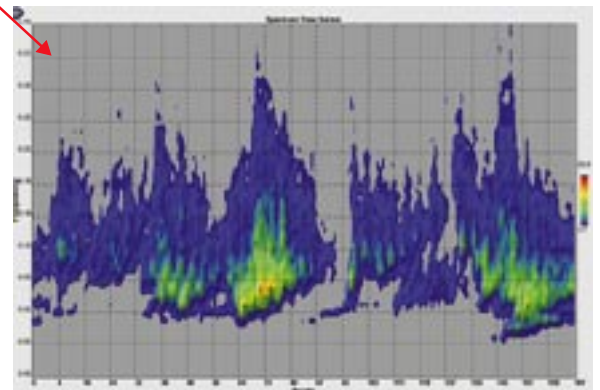
Frequency-direction spectrum in polar plot form. Better than a directional wave buoy, the ADCP can distinguish waves at similar frequencies that arrive from different directions.



Interactive time series for wave statistics: Significant Height, Peak Period, Peak Direction, Water level. Identify major wave events and define their directions unambiguously thanks to the ADCP's high quality data.



Wave power spectra. Generate greater confidence in your results. Spectra are estimated from three independent data types, including direct measurements of surface and near-surface variability.



Time series of wave power spectra. Make rapid analysis and get fast answers. At a glance, you can pick out the times of significant wave energy and zoom on these events for viewing and analysis.